



SILBO-RB44

CELLULAR ROUTER

STAY CONNECTED

Invendis
Invent, Discover.



PROCESSOR

Mediatek MIPS 580MHz Process
128MB DDR, 16MB Flash

Wi-Fi

2.4GHz, 300Mbps AP/Station,
External 5dBi antennas

OPERATING SYSTEM

Linux

NMS/VPN

OpenVPN, IPSec, etc. Custom network management service for remote management and configuration

LTE CONNECTIVITY

4G/3G/2G with Dual SIM,
External antennas (3-9dBi)

ETHERNET

Five port 10/100
(Configurable as LAN/WAN)

ROUTER FEATURES

WebUI for easy configuration,
Supports Multiwan with Failover,
Data based SIM switching etc.

POWER

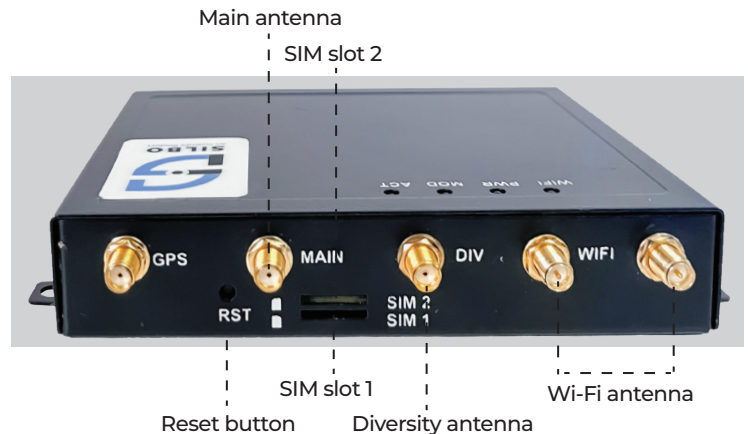
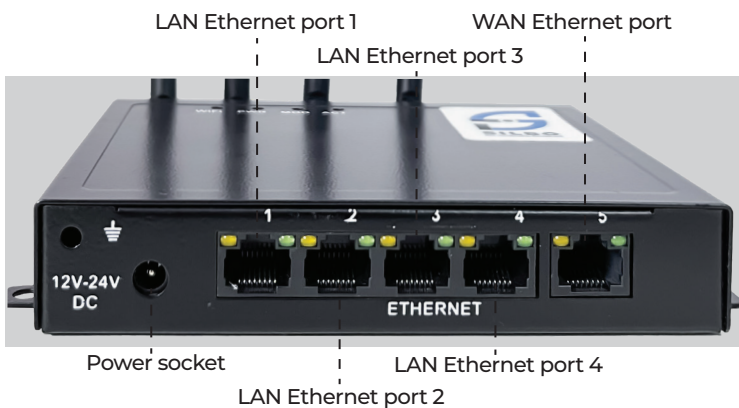
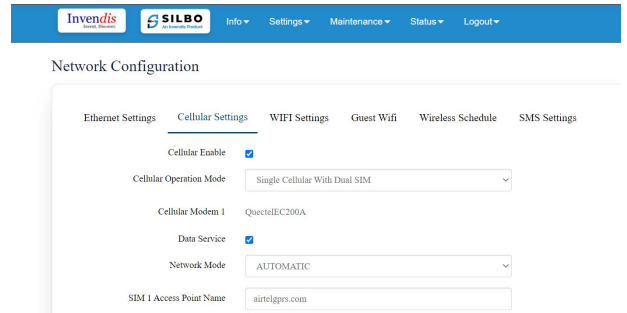
10-30V DC Input

PRODUCT DESCRIPTION

SILBO-RB44 is a dual sim, industrial grade Multi-WAN router. It is extremely robust and is designed for use in 24 X 7 operations.

It is equipped with LTE Cellular module, Wi-Fi 4 and Five 10/100 Ethernet ports. It supports Wi-Fi 4, 802.11 b/g/n standards with a max speed of 300Mbps on 2.4 GHz.

SILBO-RB44 enables users to connect to 4G/LTE mobile connection with downlink speeds of up to 150Mbps and uplink speeds of upto 50Mbps providing fast internet experience.



FEATURES

Cellular

○ Cellular Module	4G (LTE) – Cat 4 up to 150 Mbps, 3G – Up to 42 Mbps, 2G – Up to 236.8 kbps
○ Status	Signal strength (RSSI), SINR, RSRP, RSRQ
○ Band Management	Used band status display
○ APN	Configurable, Auto APN
○ Bridge	Direct connection (bridge) between mobile ISP and device on LAN
○ Passthrough	Router assigns its mobile WAN IP address to another device on LAN

WIRELESS

○ Wireless mode	IEEE 802.11b/g/n, Access Point (AP), Station (STA)
○ Wi-Fi Security	WPA2-PSK, WEP, WPA-EAP, WPA-PSK; AES-CCMP, TKIP
○ SSID	Two (Single and Guest)
○ Wi-Fi Users	Up to 32 simultaneous connections

ETHERNET

○ WAN	1 x WAN port (can be configured to LAN) 10/100 Mbps, compliance with IEEE 802.3, IEEE 802.3u standards, supports auto MDI/MDIX
○ LAN	4 x LAN port (can be configured to WAN) , 10/100 Mbps, compliance with IEEE 802.3, IEEE 802.3u standards, supports auto MDI/MDIX

NETWORK

○ Routing	Static routing
○ Network Protocols	TCP, UDP, IPv4, IPv6, ICMP, NTP, DNS, HTTP, HTTPS, FTP, PPP, UPnP, SSH, DHCP, SNMP, MQTT
○ Connection Monitoring	Ping Reboot, Periodic Reboot
○ Firewall	Port forward, traffic rules, custom rules
○ DHCP	Static and dynamic IP allocation
○ Failover	MultiWAN, Cellular, Wired and WiFi WAN options, each of which can be used as backup, using automatic Failover

SECURITY

○ Authentication	Pre-shared key, digital certificates, X.509 certificates
○ Firewall	Unlimited firewall configuration firewall rules can be enabled via WebUI
○ VLAN	Port and tag based VLAN separation
○ Mobile Quota Control	Set up custom data limits for the SIM card, automatic sim switching based on the data limit

VPN

- | | |
|--------------|---|
| ○ OpenVPN | Multiple clients with encryption |
| ○ IPsec | IKEv1, IKEv2, supports up to 2 x VPN IPsec tunnels (instances), with 5 encryption methods (DES, 3DES, AES128, AES192, AES256) |
| ○ PPTP, L2TP | Client/Server services can run simultaneously |

MONITORING & MANAGEMENT

- | | |
|----------|---|
| ○ WEB UI | HTTP/HTTPS, status, configuration, FW update, diagnostics, system log, kernel log |
| ○ FOTA | Firmware update from sever, |
| ○ SSH | SSH (v1, v2) |
| ○ SMS | SMS configuration, Reboot |
| ○ RMS | Invendis Remote Management System (RMS) |

SYSTEM CHARACTERISTICS

- | | |
|-------------------|------------------------------------|
| ○ CPU | Mediatek, MIPS processor, 580 MHz, |
| ○ RAM | 128 MB, DDR2 |
| ○ FLASH Storage | 16 MB, SPI Flash |
| ○ Real Time Clock | RTC with builtin battery backup |

FIRMWARE / CONFIGURATION

- | | |
|-----------------|---|
| ○ WEB UI | Update FW from file, check FW on server, settings import/export |
| ○ FOTA | Update FW/configuration from server |
| ○ RMS | Update select configuration for multiple devices |
| ○ Keep Settings | Update FW without losing current configuration |

FIRMWARE CUSTOMIZATION

- | | |
|-----------------------|--|
| ○ Operating System | OpenWrt based Linux OS |
| ○ Supported languages | Busybox shell, Lua, C, C++ |
| ○ Development Tools | SDK package with built environment provided (Optional) |

POWER

- | | |
|-----------------------|--|
| ○ Connector | DC Jack |
| ○ Input Voltage Range | 10–30 VDC, Reverse polarity protection |
| ○ Power Consumption | < 5 W Max |

SILBO-RB44

PHYSICAL INTERFACES (PORTS, LEDS, ANTENNAS, BUTTONS, SIM)

○ Ethernet	5 x RJ45 ports, 10/100 Mbps
○ Status LEDs	2 x Cellular , 5 x Ethernet, 1 x Power, 1x WiFi/System
○ SIM	2 x Nano SIM
○ Antennas	2 x Cellular, 2 x Wi-Fi
○ Reset	Factory reset button

PHYSICAL SPECIFICATION

○ Casing Material	Metal enclosure
○ Dimensions (WxHxD)	160 x 28 x 120 mm
○ Weight	300g
○ Mounting Options	Wall mounting screw slots

OPERATING ENVIRONMENT

○ Operating Temperature	-10 C to 65 C
○ Operating Humidity	10 % to 90 % non-condensing
○ Ingress Protection Rating	IP30



118,000+
Telecom Towers



700+
Solar Sites



15+Global
MNO/Tower CO



30,000+
Routers



26+
Countries



500,000+
Connected Assets



20,000+
Enterprise Users



sales@invendis.com



www.invendis.com



+91 97394 33733



No. 230, 1st Cross, 38th Main,
BOOHBCS Layout, BTM 2nd Stage,
Bangalore – 560 068

Invendis
Invent, Discover.



SCAN FOR
MORE DETAILS